

District 4 Update

Ritchie Swindell, District Engineer

District 4 Overview and Facts

- 31 Counties
- 3,476 State Route Miles
- 480 Positions
- 6.0 % Vacancy Rate



Onward and Upward with Great Distinction



MRS. NORA LAWRENCE SMITH, EDITOR OF THE Ashburn "Wiregrass Farmer", was mistress of ceremonies at the dedication ceremony for 37 miles of concrete paved Interstate Route 75 across Tift and Turner counties in south Georgia on October 9. "Miss Nora" is pictured above conferring with Earl Olson of Tifton, division highway engineer.

**Gov. To Dedicate
Longest New Road
Section Oct. 9th**

The longest section of interstate highway yet completed in Georgia will be dedicated by Governor Vandiver and a host of state and county officials on Friday, Oct. 9.

The ceremony will take place in Turner County just north of Ashburn near the Crisp county line and will include a dedication address by Governor Vandiver, a motorcade over the completed highway and a barbecue in Tift County. Scores of state officials and news editors from all parts of Georgia are expected to attend.

This new section of interstate highway is 37 miles long and extends the entire length of Turner and Tift counties. It consists of dual 24-foot traffic lanes of 9-inch concrete, built along a 300-foot wide right of way. Each traffic lane is flanked on the outside by a surface shoulder ten feet in width, and a 40-foot wide median. The 37-mile stretch includes 32 bridges and 16 frontage roads. It was built at a cost of \$13,896,299, including rights of ways and utilities.

This completed section is part of Interstate Route 75, which eventually will extend from Chattanooga, Tenn., through Atlanta, Macon, Valdosta and on to Tampa, Fla. It is the first interstate construction to be completed in south Georgia. In addition to this 37-mile portion, some 46 miles of Interstate 75 are under construction in Cook, Lowndes, Crisp and Dooly counties.

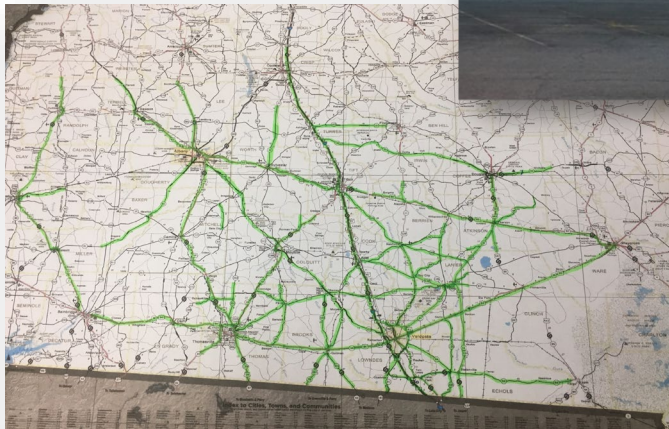
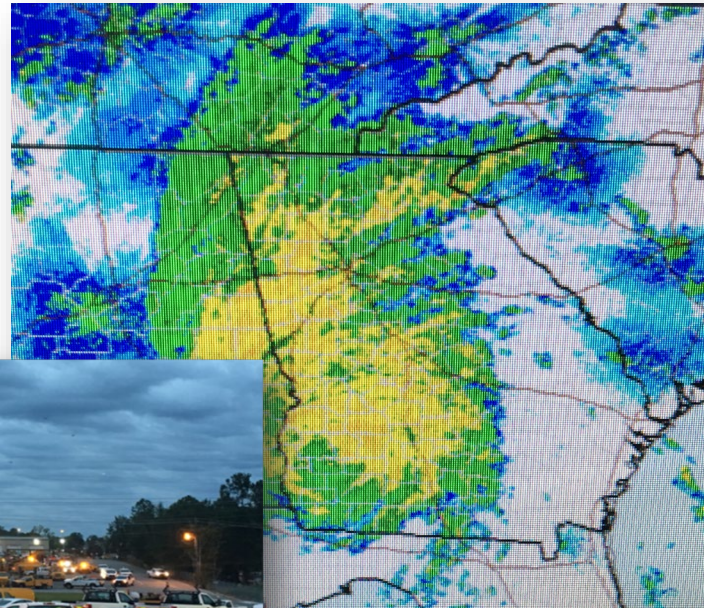
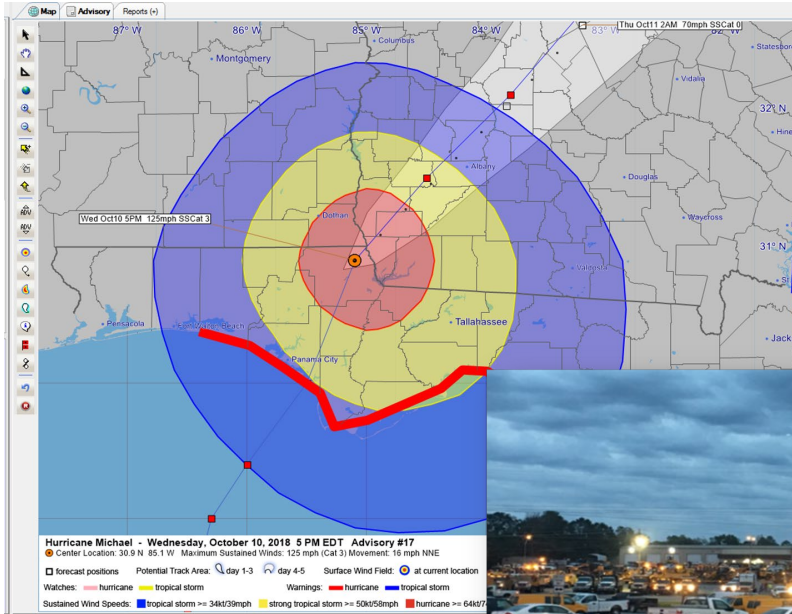


Emergency Operations

Southwest Georgia Storm Events 2017 to Present

- Hurricane Matthew
- Hurricane Irma
- Winter Storm Inga
- Winter Storm Grayson
- Hurricane Michael
- March 2019 Tornadoes

Hurricane Michael October 2018



Hurricane Michael October 2018



Baker County



Baker County



Calhoun County



District 1 Heading our Way



Calhoun County

Ever Growing Debris Piles

Mitchell County



Seminole County



Early County



Miller County



Crisp County



Worth County



Loads Hauled

- GDOT 4,614 Loads
- Contractors 593,307 Cubic Yards

Quitman County



GDOT still hauling in various Counties

Tornadoes of March



- Grady County declared a disaster March 3, 2019
- 956 Loads in 9 Days

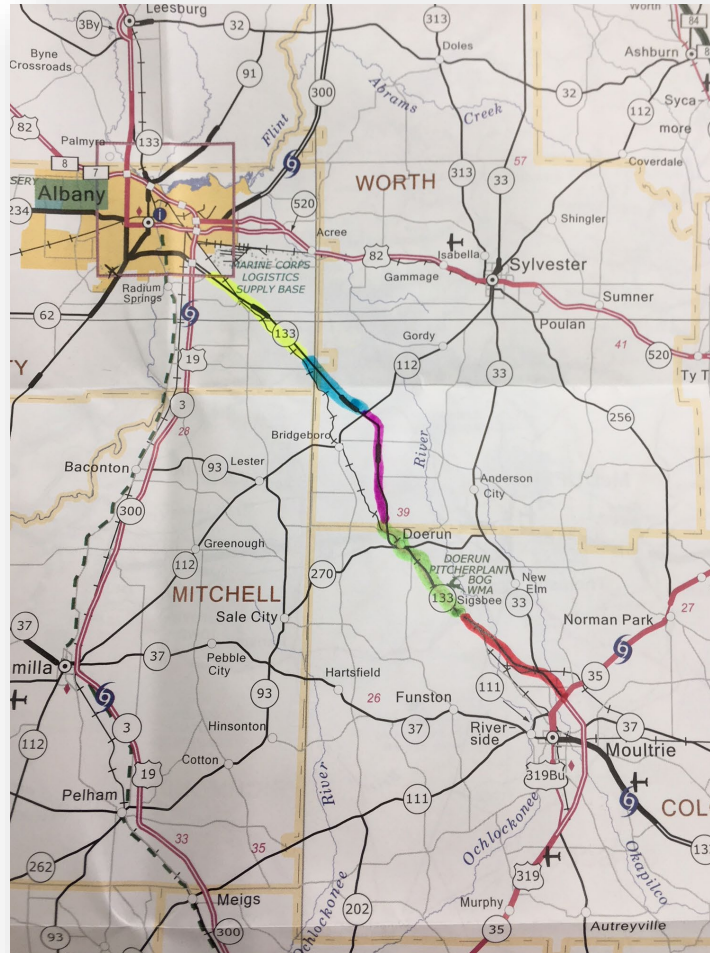
SR 133 Brooks & Colquitt Counties



**5 Projects Complete or Nearly Complete with a Total Project Cost of
\$186,572,139**

SR 133 Future Projects

**5 Future Projects Remaining
between Moultrie and Albany
Estimated Project Cost of
\$278,472,502**



Ichawaynochaway Creek SR 216 - Baker County



Project Cost \$12,461,160.28

Bridge Replacement Calhoun & Dougherty Counties



Project Cost \$9,843,346.27

TIA Regions

- Southern Georgia Region Voted/Approved May of 2018
- Collections began October 2018
- Thru - Jan. TIA projected collections are ahead 10.3%



TIA Project US 280/SR 30 Bridge over Lake Blackshear



Project Cost \$19,275,481

US 280 Widening from Crisp County Line to SR 300 Connector



Project Cost \$32,899,573

Cordrays Mill

SR 45 - Calhoun County



Project Cost \$9,478,520.60

I-75 Interchange Project Lowndes County

Exit 22



Exit 29



- **Project Cost \$49,349,678**
- **59% Complete**
- **Reconstruction of the Interchanges @ Exit 22 – SR7 & Exit 29 - SR 122**

I-75 Resurfacing Project

Exit 84 - Turner County



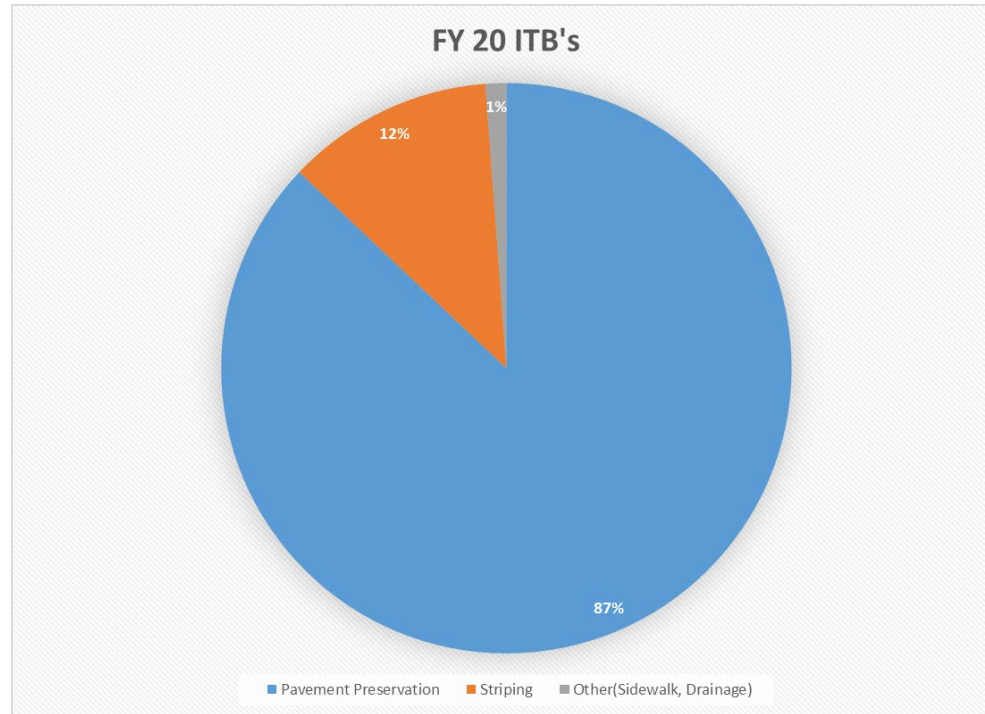
Exit 99 - Crisp County



- Project Total **\$19,293,536.25**
- 38% Complete
- Consists of 14.470 miles of Milling and Plant Mix Resurfacing on I-75/SR 401

HB 170

Maintenance FY 20 ITB'S



Category	Planned Amount	%age
Pavement Preservation	\$14,800,000	87%
Striping	\$2,000,000	12%
R/W Reclamation	\$0	0%
Other(Sidewalk, Drainage)	\$200,000	1%

TOTAL \$17,000,000

SR 111 - Grady County White Topping Project



SR 520 - Atkinson County Pavement Preservation

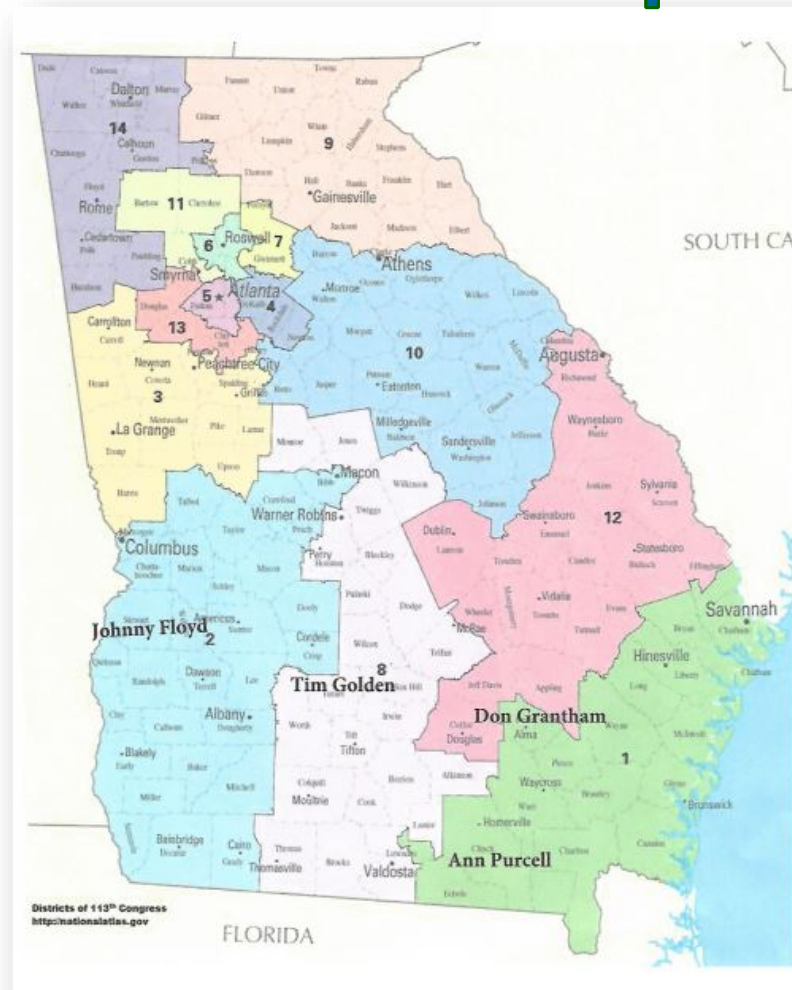


SR 107 Irwin - Pavement Preservation (2' Shoulder Widening & Edge Line Rumble Strips)

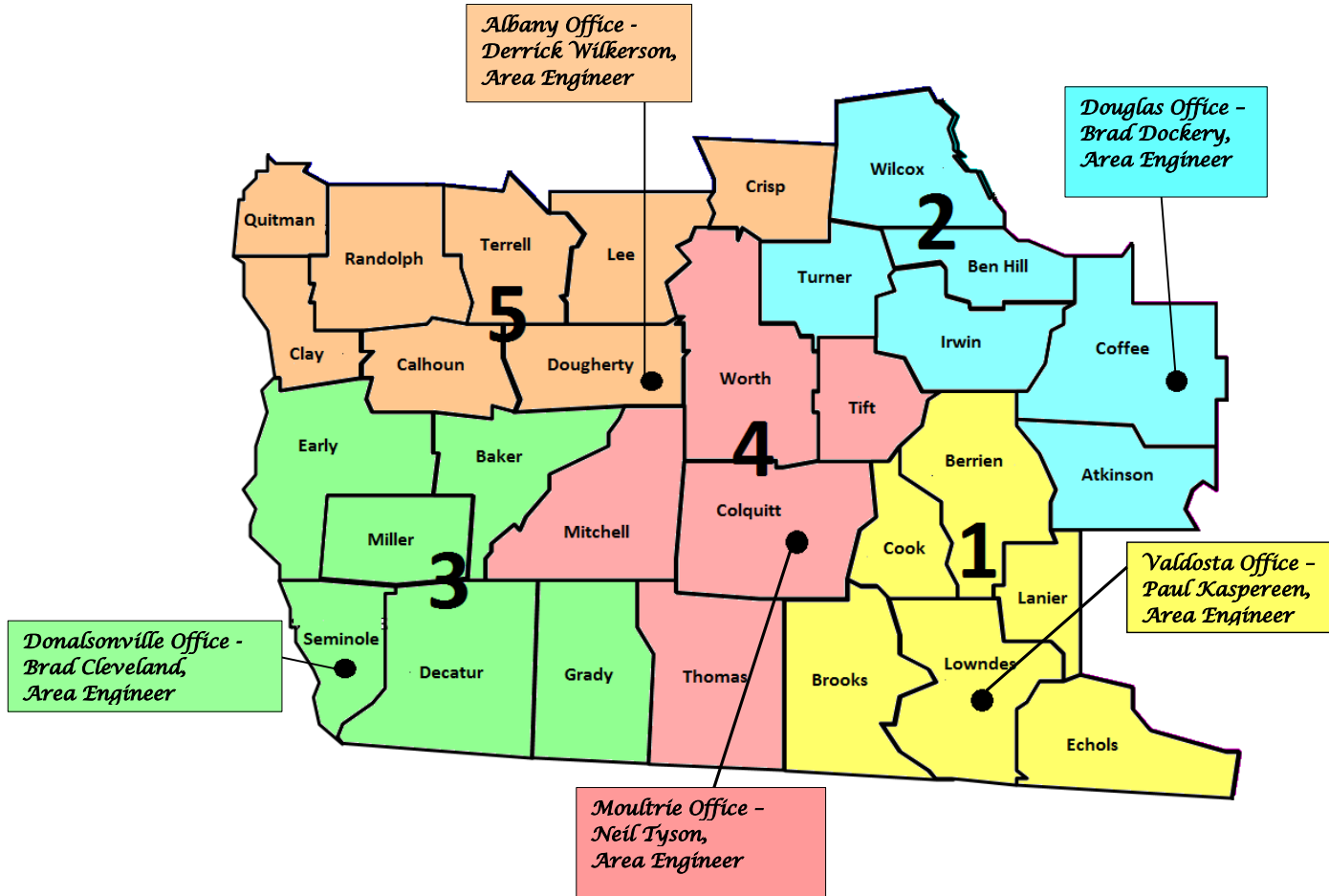


Georgia State Transportation Board Districts Map

We are Supported by 4
State Transportation
Board Members



District 4



**We are a little beaten and
battered but still holding the
earth together in District 4.**



Questions?